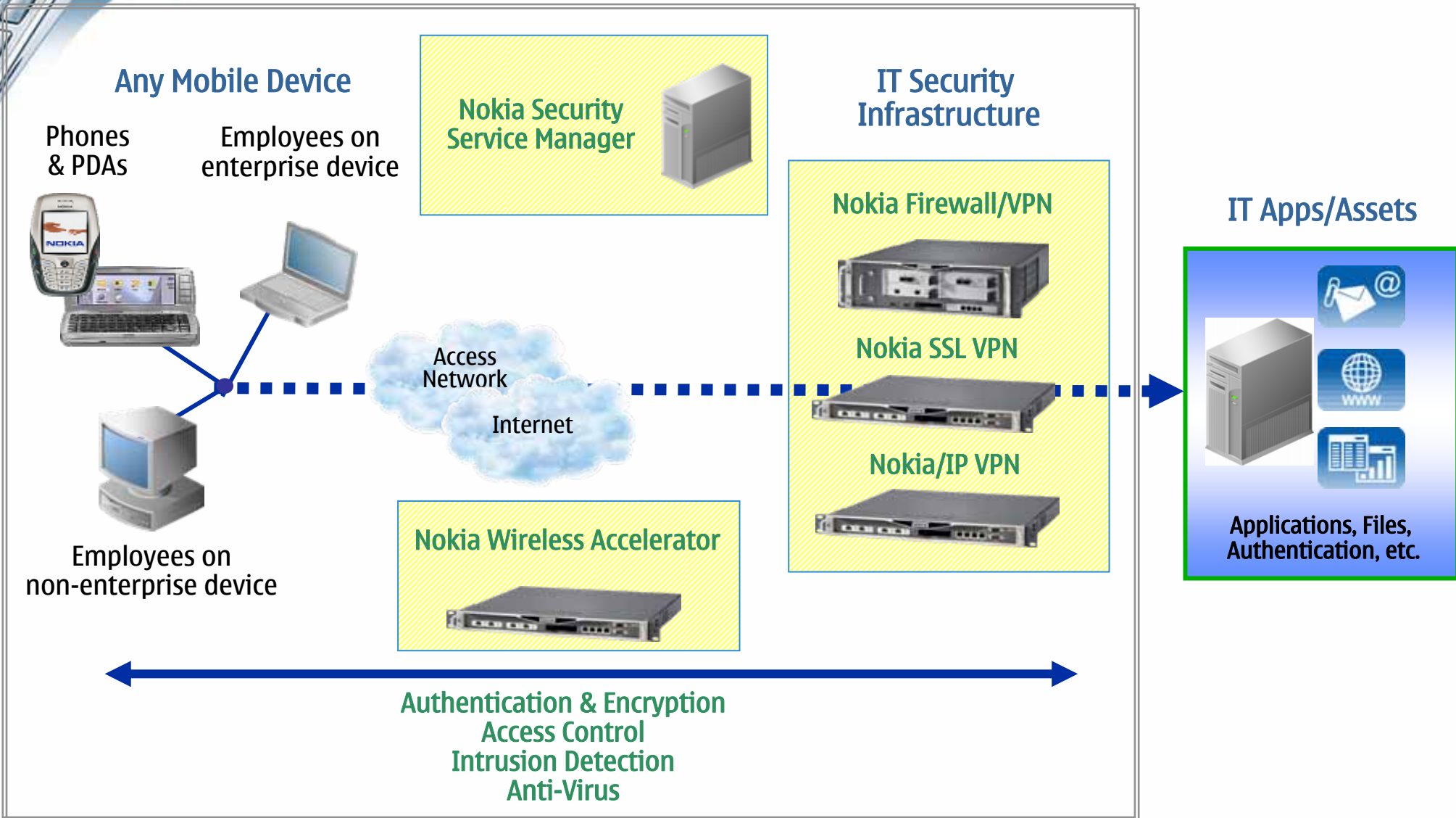




# Nokia Update

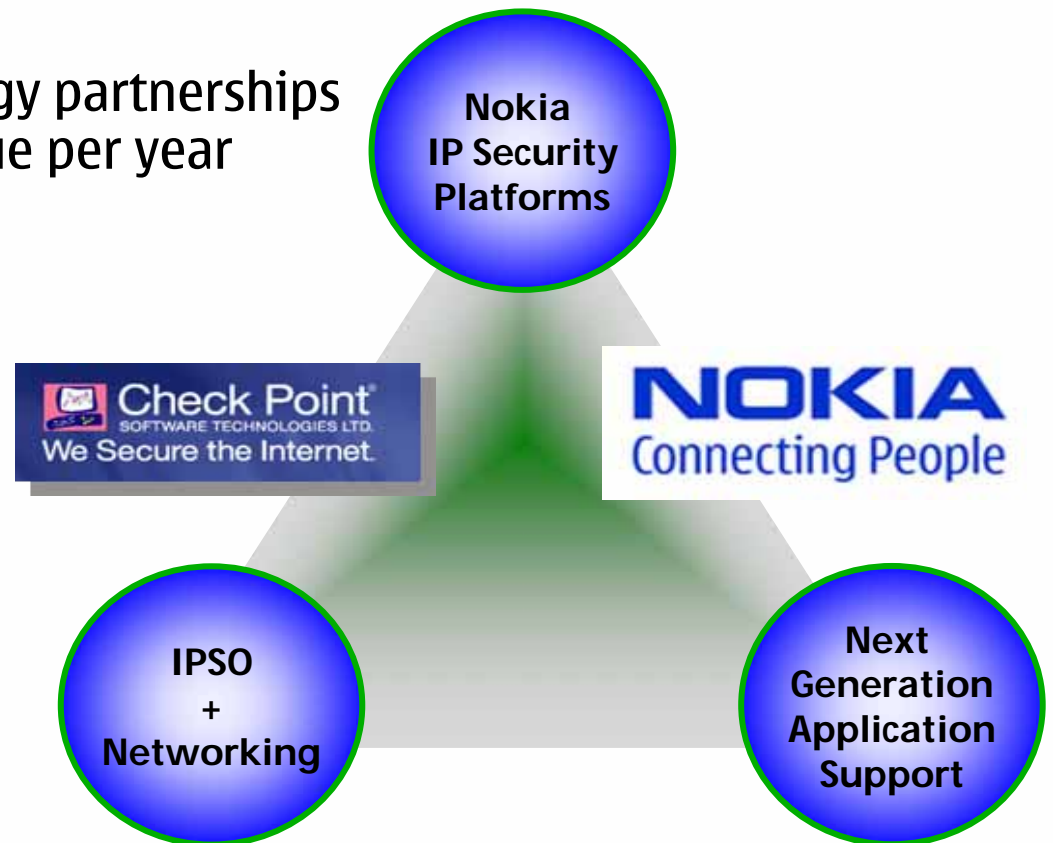
Harri Hämäläinen  
Nokia Enterprise Solutions

# Nokia Secure Mobile Connectivity

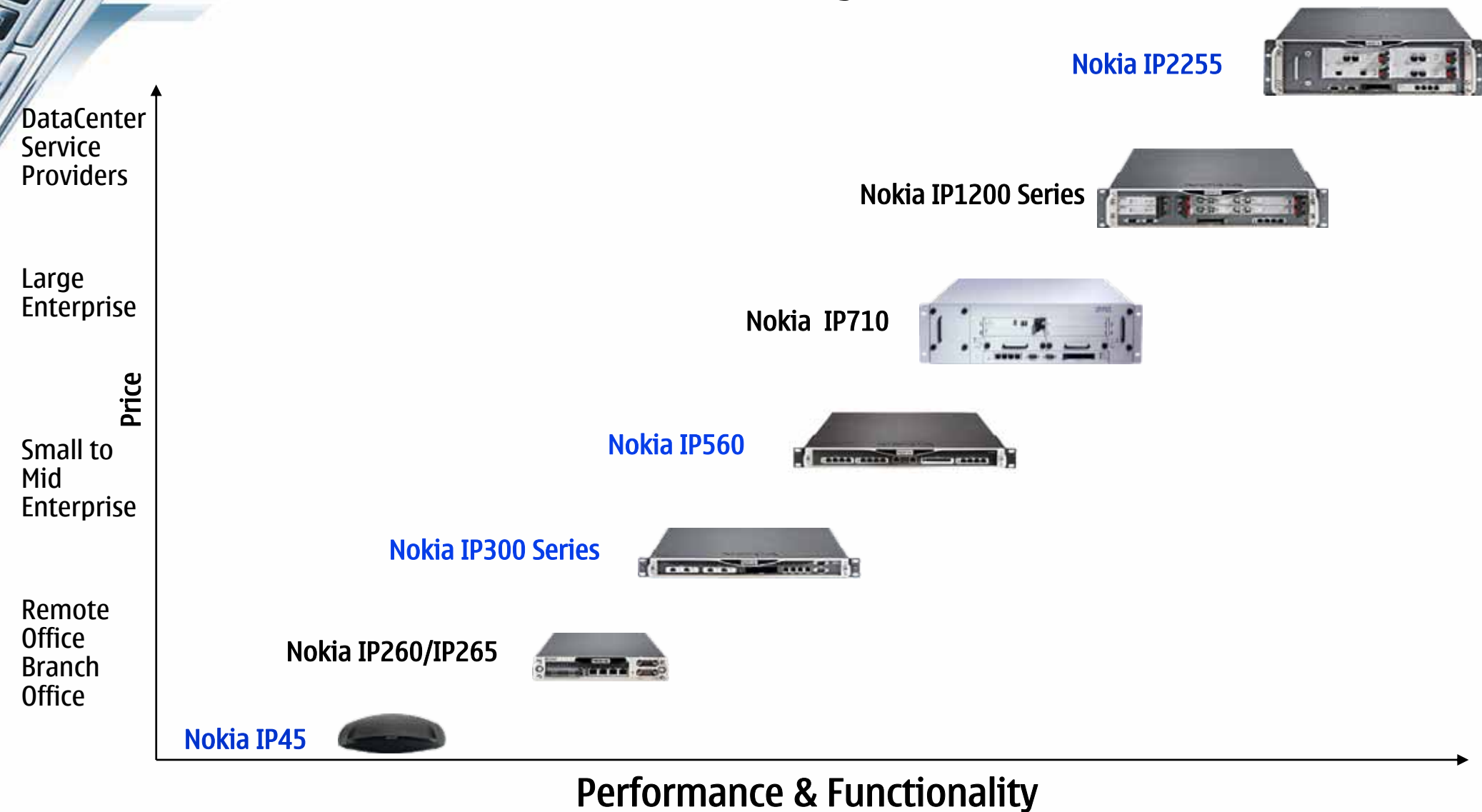


# Nokia and Check Point

- Nokia and Check Point joint market share ~20%
- In its 8th year
  - one of most successful technology partnerships
  - generating over \$500 mil revenue per year
- Nokia and Check Point support network security for 92 of the Fortune 100



# Nokia IP Security Platforms



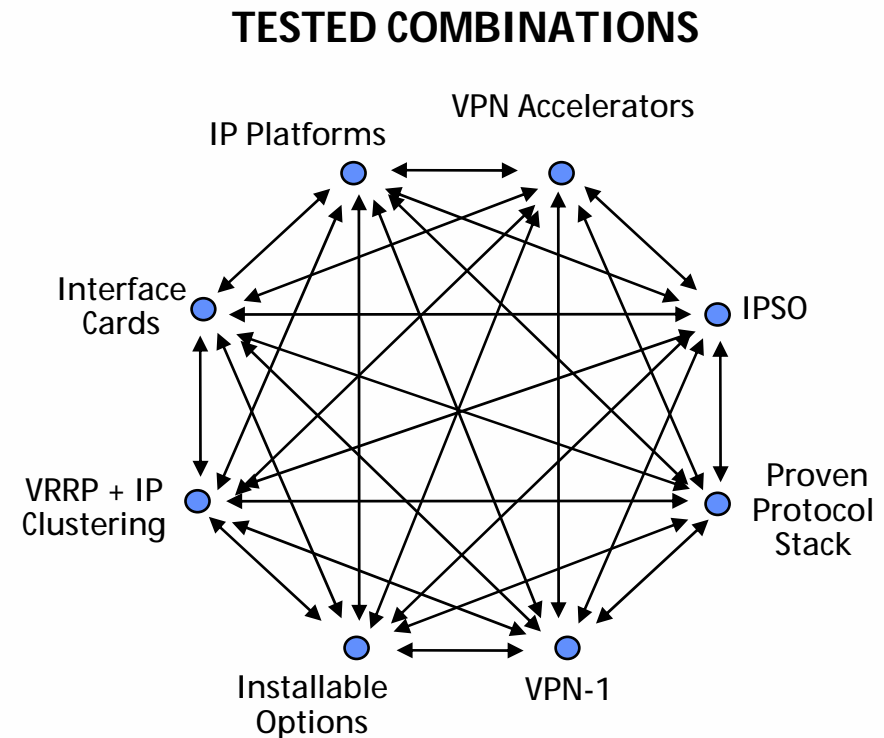
# Nokia IPSO



# Nokia Quality

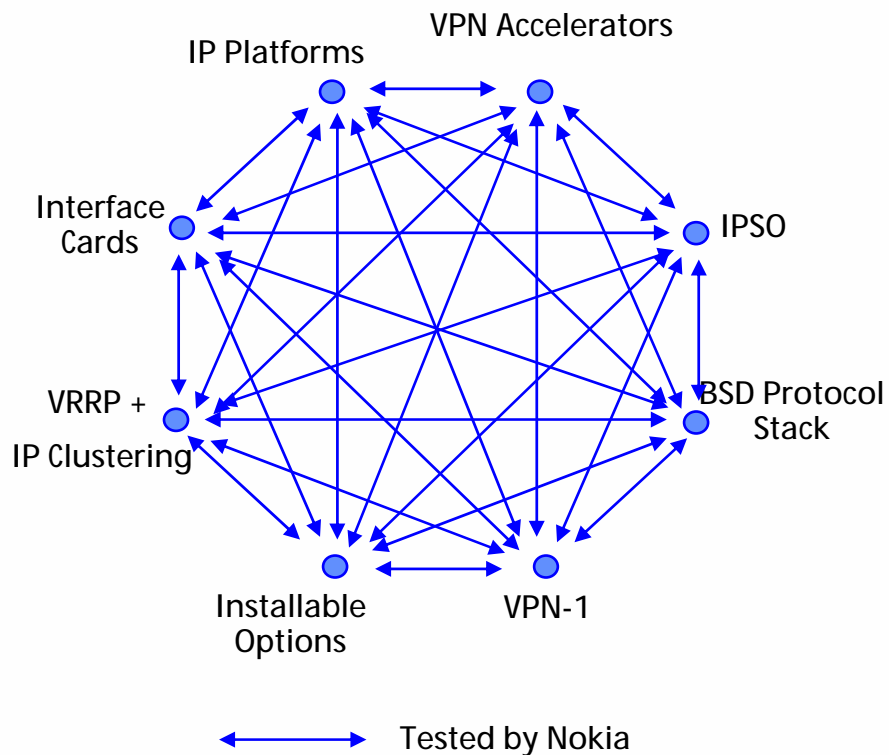
**Nokia IP Security Platforms are subjected to the most exhaustive quality assurance of any security appliances in the industry**

- Nokia tests EVERYTHING:
  - 10+ IP platforms with
  - ~50 installable options\* with
  - 5 major versions of IPSO with
  - 6 versions of VPN-1 with
  - 4 VPN accelerator cards with
  - ~10 routing protocols with
  - VRRP and IP Clustering
- Investment Protection - Nokia QAs new software on EOS hardware
- Quality without compromise -Nokia has held release of VPN-1 on Nokia until QA issues are resolved

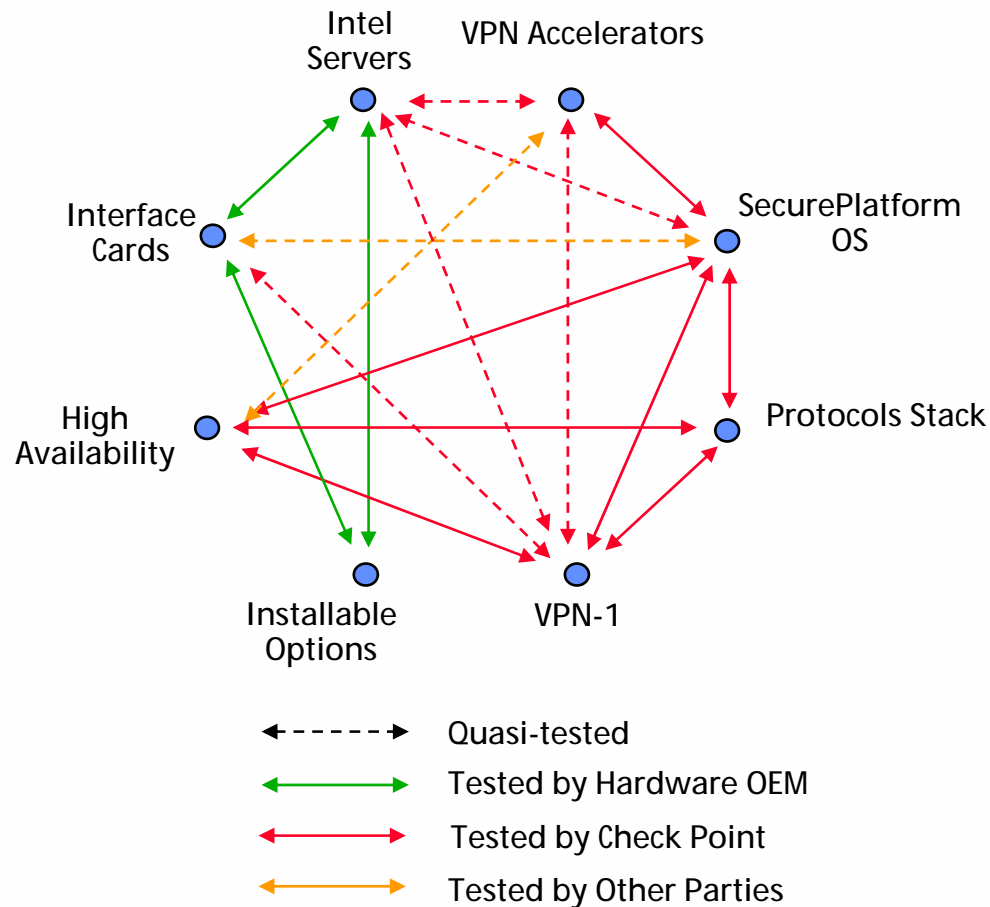


# QA Testing Comparison

## NOKIA TESTED COMBINATIONS



## SECUREPLATFORM TESTED COMBINATIONS



# IPSO 4.0

- New Features:
  - New look and feel of Network Voyager
  - Role-based management (Role-Based Access Control)
  - IP Clustering for IP2250
  - BGP 4+ (BGP For IPv6)
  - SNMP v3 USM Improvements
  - Route maps
- New Interface Card: 10GigE
- Support Check Point VPN-1 NGX R60
- Platform Support
  - IP120/130, IP260/265, IP330, IP350/355/380/385, IP530, IP650, IP710/740, IP1220/1260, IP2250
- Upgrade Path: IPSO 3.5, ..., IPSO 3.9



# IPSO 4.0 Network Voyager Layout

**Title**

**Navigation**

**Data**

**Apply**

**Nokia Network Voyager** nms5.eng

Current Configuration State: **Saved** [Log Off](#) **NOKIA**

**System**

Expand Tree | Collapse Tree

- System
  - Home
  - Configuration
    - Change Password
    - Firewall and Other Packages
    - Configuration Summary
    - Interface Configuration
    - System Configuration
    - High Availability
    - Security and Access
    - Routing
    - Traffic Management
    - Router Service
    - IPv6 Configuration
    - Asset Information
  - Monitor
    - Clustering Monitor
    - Transparent Mode Monitor
    - Forwarding Table
    - Route
    - Monitor
    - System Configuration
    - Reports
    - System Health
    - System Logs
    - Routing Protocols
    - Hardware Monitoring
    - IPv6 Monitor

**nms5.eng**

**Model:** IP600  
**Software Release:** 4.0-BUILD021A  
**Software Version:** releng 1515 09.29.2005-080000  
**Serial Number:** 8a002022945  
**Current Time:** Mon Oct 3 21:03:12 2005 GMT  
**Uptime:** 4 days 4 hours 5 minutes  
**Physical Memory:** 256 MB  
**User:** admin

**Active Packages**

Package	Description
No active packages	

Reset Apply Save

# IPSO 4.0 Network Voyager Config Example

**Nokia Network Voyager** Current Configuration State: **Unsaved** [Log Off](#) **NOKIA**

**System** Tue Oct 4 04:34:45 2005 GMT [Help](#)

[Expand Tree](#) | [Collapse Tree](#)

- System
  - Home
  - Configuration
    - Change Password
    - Firewall and Other Packages
    - Configuration Summary
    - Interface Configuration
      - Interfaces
        - ARP
        - Transparent Mode
        - Link Aggregation
        - FWVPN Tunnel
      - System Configuration
        - High Availability
        - VRPP
        - Clustering**
        - Security and Access
        - Routing
        - Traffic Management
        - Router Service
        - IPv6 Configuration
        - Asset Information
          - Asset Summary
          - Copyright Information
    - Monitor
      - Clustering Monitor
      - Transparent Mode Monitor
      - Forwarding Table
      - Route
      - Interface Monitor
      - System Utilization
      - Reports
      - System Health
      - System Logs
      - Routing Protocols
      - Hardware Monitoring
      - IPv6 Monitor

### Clustering Configuration

[Change admin password](#)

**Cluster Status**

Cluster ID:  \*

Cluster Protocol State: ● (master)

Time Since Join: 0:05:34:37

Number of Interfaces: 2

Cluster State:  Up  Down

Cluster Mode:  Multicast  Multicast with IGMP  Forwarding

Work Assignment:  static  dynamic

Performance Rating (default: 230):

Failure Interval (Milliseconds):

Delete cluster configuration on this system:

**Interface Configuration**

Interface	Status	Select	Networks Connected	Cluster IP Address	Primary	Secondary	Hash Selection
<a href="#">eth-s1p1c0</a>	●	<input type="radio"/> Yes <input checked="" type="radio"/> No	205.226.18.0/24	<input type="text"/>	<input type="radio"/>	<input type="radio"/>	default ▾
<a href="#">eth-s1p2c0</a>	●	<input checked="" type="radio"/> Yes <input type="radio"/> No	10.0.20.0/24	<input type="text" value="10.0.20.101"/>	<input checked="" type="radio"/>	<input type="radio"/>	default ▾
<a href="#">eth-s1p3c0</a>	●	<input checked="" type="radio"/> Yes <input type="radio"/> No	10.0.30.0/24	<input type="text" value="10.0.30.101"/>	<input type="radio"/>	<input type="radio"/>	default ▾

**FireWall Related Configuration**

**FireWall Table**

Enable VPN-1/FW-1 monitoring:  Enable  Disable

Done

# IPSO 4.0 Network Voyager Monitor Example

**Nokia Network Voyager** Current Configuration State: **Unsaved** [Log Off](#) **NOKIA**

nms5.eng

Band Tree | Collapse Tree

- System
- Home
- Configuration
  - Change Password
  - Firewall and Other Packages
  - Configuration Summary
  - Interface Configuration
    - Interfaces
    - ARP
    - Transparent Mode
    - Link Aggregation
    - FWVPN Tunnel
  - System Configuration
  - High Availability
  - Security and Access
  - Routing
  - Traffic Management
  - Router Service
  - IPv6 Configuration
  - Asset Information
    - Asset Summary
    - Copyright Information
- Monitor
  - Clustering Monitor
  - Transparent Mode Monitor
  - Forwarding Table
  - Route
  - Interface Monitor
  - System Utilization
    - CPU-Memory Live Utilization
    - Disk and Swap Space Utilization
    - Process Utilization
  - Reports
    - Rate Shaping Report
    - Interface Throughput Report
    - Network Throughput Report
    - Interface Linkstate Report
    - CPU Utilization Report**
    - Memory Utilization Report
  - System Health
  - System Logs
  - Routing Protocols
  - Hardware Monitoring
  - IPv6 Monitor

### CPU Utilization Report

Tue Oct 4 04:56:22 2005 GMT Help

Select Report Type:

- Hourly
- Daily
- Weekly
- Monthly
- Detailed Search

Start date:  End date:

Select Format:

- Graphical View
- Delimited text (suitable for download) Delimiter:

**CPU Utilization for Mon Oct 03 2005**

Pie Chart Legend:

- 1 - Idle
- 2 - System
- 3 - User
- 4 - Interrupt

**CPU Utilization**

Day	% Load
Aug-30-2005	1.562
Sep-01-2005	1.438
Sep-03-2005	1.125
Sep-05-2005	1.062
Sep-07-2005	1.125
Sep-09-2005	1.062
Sep-11-2005	1.062
Sep-13-2005	1.062
Sep-15-2005	1.062
Sep-17-2005	1.062
Sep-19-2005	1.062
Sep-21-2005	1.062
Sep-23-2005	0.625
Sep-25-2005	0.625
Sep-27-2005	0.625
Sep-29-2005	0.625
Oct-01-2005	0.625
Oct-03-2005	0.625

**CPU Utilization**

Done

# IPSO 4.0 Network Voyager Cluster configuration

**Nokia Cluster Voyager** Current Configuration State: **Unsaved** [Log Off](#) **NOKIA**

Cluster Tue Oct 4 05:14:16 2005 GMT [Help](#)

Expand Tree | Collapse Tree

- 103
  - Home
  - Configuration
    - Interface Configuration
    - System Configuration
    - High Availability
      - Clustering**
      - Security and Access
      - Routing
      - Traffic Management
      - Router Service
      - Asset Information
    - Monitor

### Clustering Configuration

**Cluster Status**

Cluster ID: 103

Cluster Mode:  Multicast  Multicast with IGMP  Forwarding

Work Assignment:  static  dynamic

Failure Interval (Milliseconds):

**Cluster Members**

Member ID	Performance Rating
10.0.20.55	<input type="text" value="230"/>

[Clustering Monitor](#)

**Network Configuration**

Network	State	Select	Cluster IP Address	Primary	Secondary	Hash Selection
10.0.20.0/24	●	<input checked="" type="radio"/> Yes <input type="radio"/> No	<input type="text" value="10.0.20.101"/>	<input checked="" type="radio"/>	<input type="radio"/>	default
10.0.30.0/24	●	<input checked="" type="radio"/> Yes <input type="radio"/> No	<input type="text" value="10.0.30.101"/>	<input type="radio"/>	<input type="radio"/>	default
205.226.18.0/24	●	<input type="radio"/> Yes <input checked="" type="radio"/> No	<input type="text"/>	<input type="radio"/>	<input type="radio"/>	default

**FireWall Related Configuration**

**FireWall Table**

Enable VPN-1/FW-1 monitoring:  Enable  Disable

Cold Start Interval (Seconds):

Done



# New Products in 2006



# Nokia IP VPN

Today

Summer '06

Service  
Provider/Large  
Enterprise

Nokia 500i



Nokia 500i  
RoHS compliant



Mid-size  
Business,  
Regional Offices

Nokia 100i



New →

Nokia 105i  
RoHS compliant



Small Offices  
Small  
Enterprise

Nokia 50i



Nokia 50i  
RoHS compliant



Nokia 5i & 10i



Nokia 5i & 10i  
RoHS compliant



# Nokia IP VPN Gateway Performance

Gateway	Nokia 5i	Nokia 10i	Nokia 50i	Nokia 100i	Nokia 500i
Positioning	<i>Mid-size Enterprise (Small offices, home office)</i>	<i>Mid-size Enterprise (Branch Office)</i>	<i>Mid-size Enterprise (Corp Office)</i>	<i>Mid-size Enterprise/ Managed Providers (Remote Access Services)</i>	<i>Mobile/Broadband Operators (Remote Access Services)</i>
VPN Performance (AES-256, SHA-1)**	80 Mbps	90 Mbps	120 Mbps	600 Mbps*	1.5 Gbps
Clustered VPN Performance **	Not Applicable	160 Mbps	190 Mbps	1.0 Gbps*	1.8 Gbps
Simultaneous Tunnels***	25 Tunnels	50 Tunnels	500 Tunnels	10,000 Tunnels	100,000 Tunnels
Ports (10/100) Ports (GigE)	3 0	3 0	4 0	Up to 8 Up to 4	Up to 20 Up to 8
Available Options	Not Applicable	Not Applicable	PC Card Flash	PC Card Flash Quad 10/100 Dual GigE Cu Dual GigE MMF Nokia Encryption Accelerator	PC Card Flash Quad 10/100 Dual GigE Cu Dual GigE MMF
Expansion Slots	0	0	0	2	4
Size	Desktop	Desktop	0.5U	1U	2U
Base Price (USD)	\$395	\$895	\$2995	\$9995	\$34,995

\* With Nokia Encryption Accelerator added \*\* All performance subject to change \*\*\*1 tunnel - 1 IKE Phase 1 SA, 2 IPSec Phase 2 SA

# Nokia SSL VPN

Today

Summer '06

Service  
Provider/Large  
Enterprise

Nokia 500s



Nokia 500s  
RoHS compliant



Mid-size  
Business,  
Regional Offices

Nokia 100s



New →

Nokia 105s  
RoHS compliant



Small-Mid  
Offices  
Small  
Enterprise

Nokia 60s



Nokia 50s



Nokia 50s  
RoHS compliant

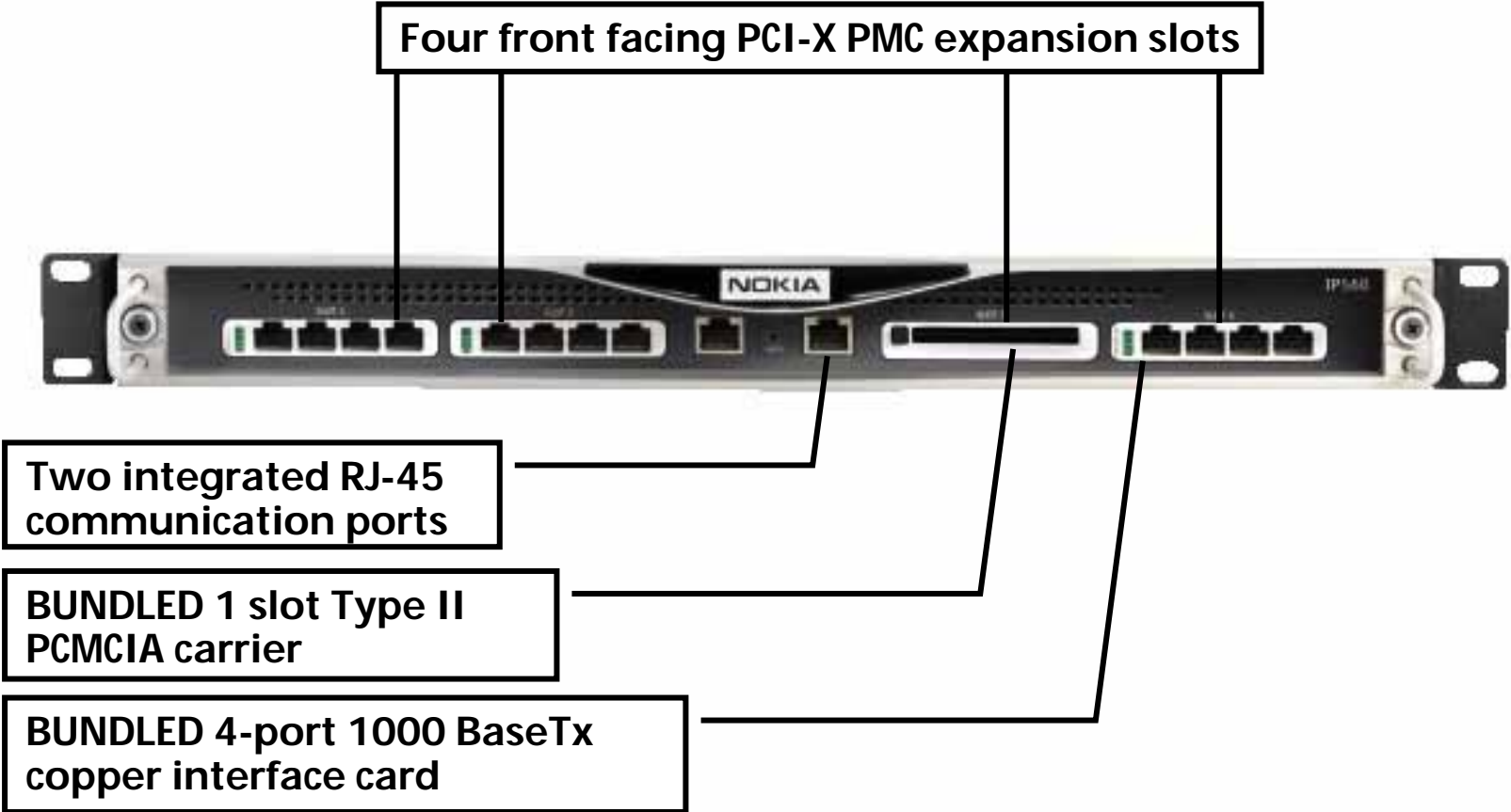




# Introducing Nokia IP560



# Nokia IP560 Front View



# Nokia IP560 Internals

- 1GB RAM standard
- Expandable to 2GB

- VPN Accelerator Card standard

- Industrial Grade 1GB Compact Flash

- OPTIONAL: Single or dual, mirrored hard disk drives

- 4 Front facing PMC expansion slots

- Slide out tray for easy serviceability

# Nokia IP560

- Nokia IPSO with Check Point applications
- RoHS compliant / lead-free manufacturing
- Up to 2GB RAM
- Solid-state slot (Compact Flash)
  - Option for up to two additional hard disk drives for storage and logging
- Four external facing PCI-X PMC card slots
  - One pre-populated with four-port 10/100/1000 Mbps Ethernet
  - Supported network interface cards
    - Four-port 10/100 Mbps Ethernet
    - Four-port 10/100/1000 Mbps Ethernet
    - Two-port 1000 Mbps Fiber Ethernet
    - Two-port 10/100/1000 Mbps Ethernet
  - Bundle One Line Rate Four-port 10/100/1000 Mbps Ethernet Card and single slot PCMCIA card carrier
- Single Internal PCI-X PMC Card Slots
  - Bundled VPN accelerator card
- Two RJ-45 Communication Ports



# Nokia IP560

## Software requirements

- Nokia IPSO 4.0.1
- Check Point R60 NGX, R55P under Selective Availability program

## Performance highlights

- 6.0 Gbps large packet firewall (1518-byte UDP)
- 440 Mbps small packet firewall (64-byte UDP)
- 8,900 HTTP transactions per second
- 58,000 TCP connections per second
- 1,500 Mbps Nokia traffic mix

## Keep in mind

- Nokia IP560 does NOT support WAN cards
- Nokia IP560 does NOT support non-RoHS interface cards
- Nokia IP560 interface cards are not hot-swappable
- Check Point management cannot be run on Nokia IP560

# Nokia IP560 Compared to Current IP Platforms

	Nokia IP560	Nokia IP380	Nokia IP530	Nokia IP710
FW Performance (1518 byte)	6,000 Mbps	1,400 Mbps	600 Mbps	1,300 Mbps
VPN Performance (1450 byte)	1,900 Mbps	313 Mbps	142 Mbps	380 Mbps
Base ports	4 GigE	4 10/100	4 10/100	4 10/100
Add'l ports	4 10/100	4 GigE	4 GigE	4 GigE
Form factor	1 RU	1 RU	2 RU	3 RU
Purchase price	\$16,495	\$9,995	\$13,495	\$16,495
Add'l NIC cost	\$1,500	\$9,000	\$9,000	\$9,000
Configured cost	\$17,995	\$18,995	\$22,495	\$25,495

*Nokia IP560 offers at least 4x the performance, 2x GigE port density, better rack density at less cost*

# Nokia IP390



- RoHS Compliant
- Up To 2 GB DDR Memory
- Diskless (Compact Flash)
  - Option for one additional hard disk drive for storage and logging
- Four onboard 10/100/1000 Mbps Ethernet ports
- 2 PC Card Slots
- Two External Facing PCI-X PMC Card Slots
  - Network Interface Cards
    - Four-port 10/100 Mbps
    - Two-port 1000 Mbps Fiber
    - Two-port 10/100/1000 Mbps
- Onboard Accelerator and Single Internal PCI-X PMC Card Slots
  - Accelerator Cards
- Two RJ-45 Communication Ports (Console and Auxiliary)

## Expected Performance

- Connections per Second: 30,000
- Total Connection Table: 800,000
- Encryption Acceleration for DES, 3DES, AES128, AES256
- Latency less than 200  $\mu$ s



# Industry Trends

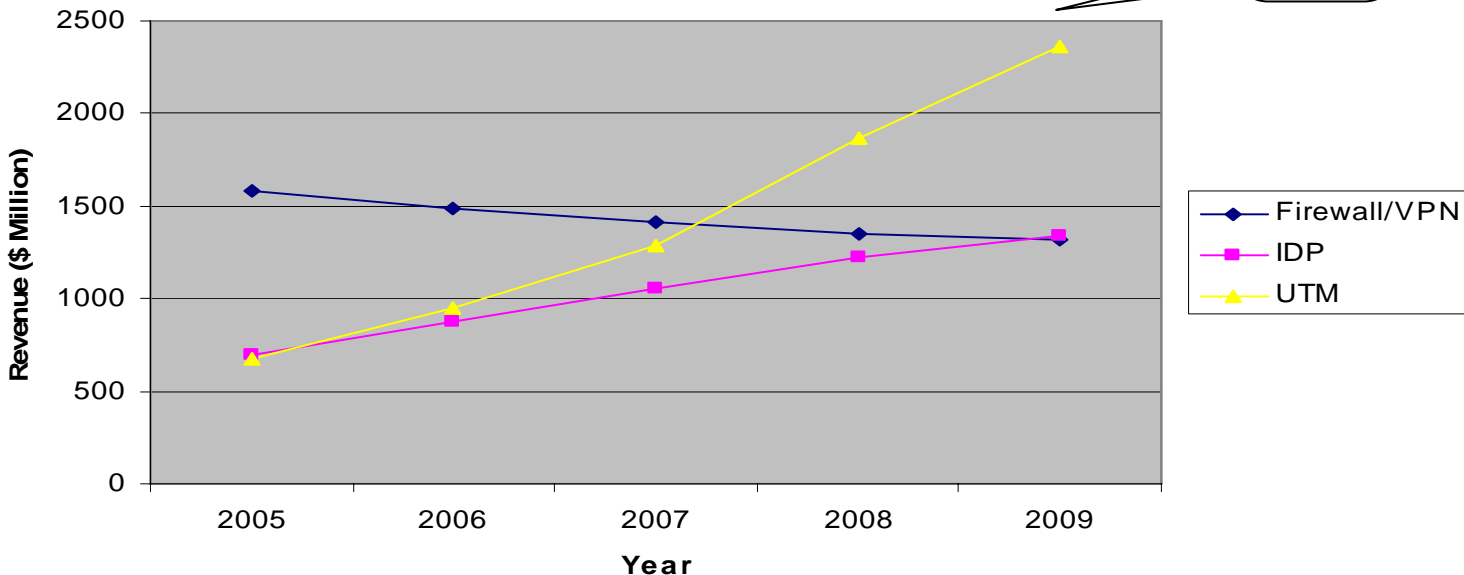
## Security Continues to Be a Top Priority

Rank	Business Priority	Technology Priority
1	Bus. Proc. Improvements	Bus. Intelligence. Apps
2	Controlling Ops Costs	<b>Security technologies</b>
3	Grow Customer Relations	Mobile workforce enable
4	Improve Competitive Adv.	Collaboration Technology
5	Competitive Positioning	Customer Sales/Service
6	Integrate BI in product/serv	SOA

Threat Management Forecast

\$3B

\$5B



gement  
a, voice  
modernize

Gartner.



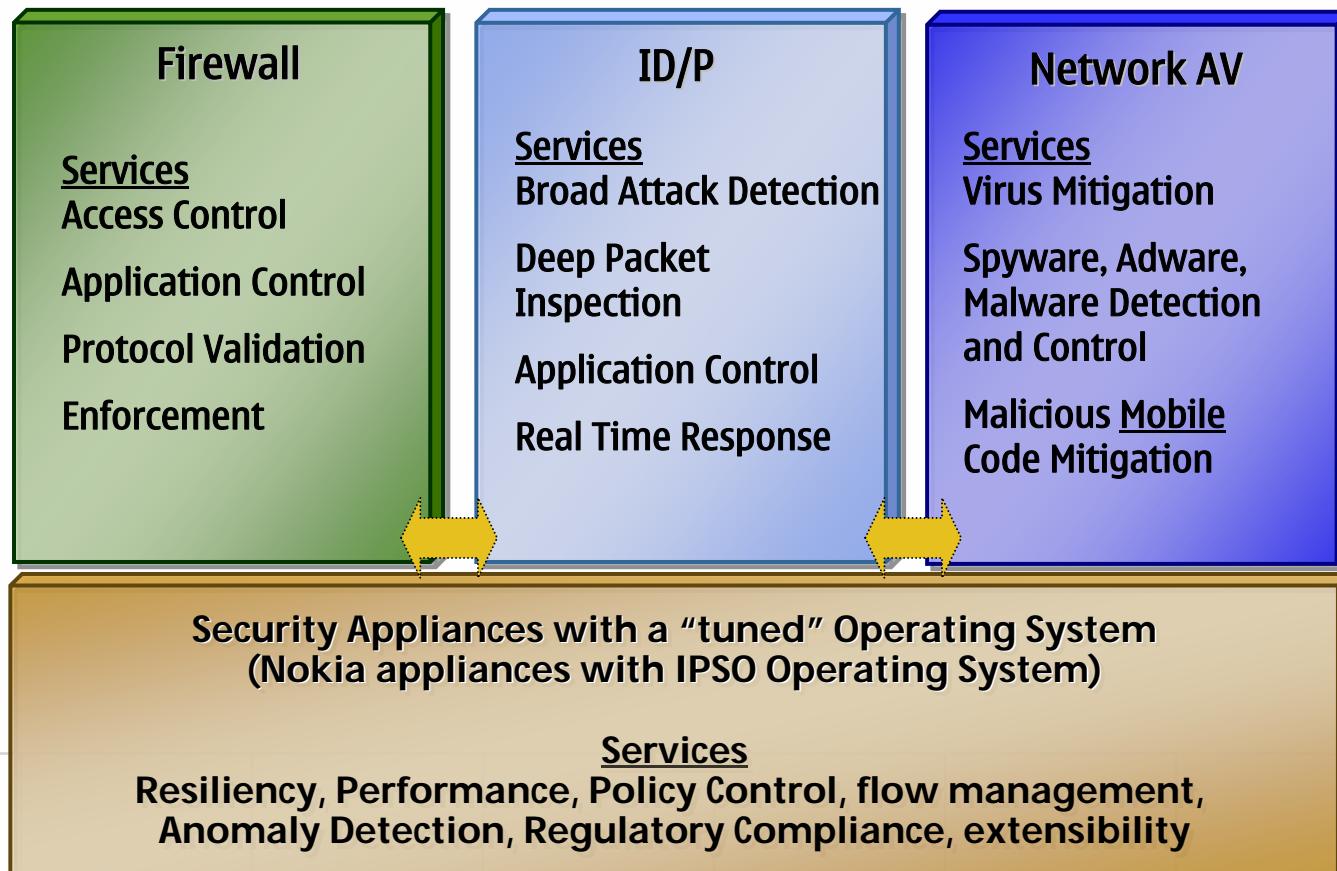
# Nokia in Unified Threat Management

## Problem:

- Multiple discrete services x Multiple Locations = Security Trade-Offs

## Nokia UTM:

- Unified secure mobility services x Multiple locations = Limited Trade-Offs



# Nokia Integrated Security with VPN-1 UTM

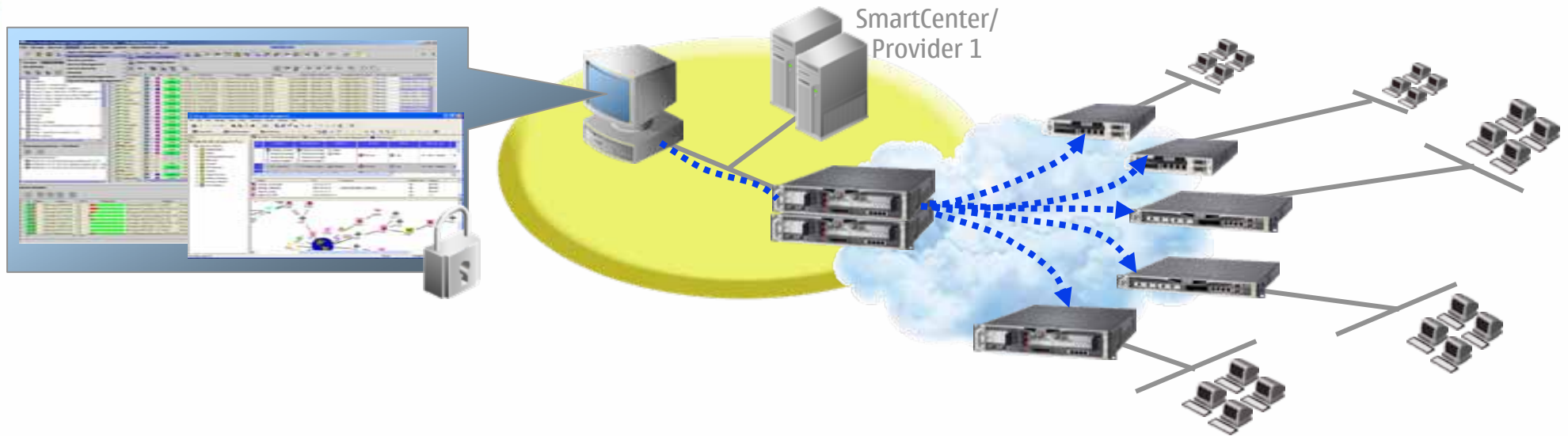
Available first on Nokia IP-390

- RoHS compliant / lead-free manufacturing
- Four integrated 10/100/1000 BASE-T Ethernet interfaces
- Integrated Type II PCMCIA slots
- 1 GB RAM, expandable to 2 GB
- 1GB Solid-state compact flash
  - Optional hard disk drive for storage and logging
- Two external facing PCI-X PMC card slots
- Supported network interface cards
  - Four-port 10/100 BASE-TX Ethernet
  - Two-port 1000 BASE-SX Fiber Ethernet
  - Two-port 10/100/1000 BASE-T Ethernet
- Two RJ-45 Communication Ports

Available Q3, 2006

Pricing to be determined

# Management of Nokia IP Security Appliances



- Centralized management for large Nokia IP Security deployments
  - Monitoring and reporting
  - Deployment, maintenance, and recovery
  - Intuitive installation and configuration
- Delivering towards one consolidated management suite
- Reduces administrative tasks



# Appliance Manager Key Features

- Highly configurable SNMP-based monitoring for health, faults, & performance
  - Both real-time and historical monitoring (for trending, capacity planning, etc.)
  - Can automatically discover new IP Security Appliances added to the network
  - Receives SNMP traps
- Fault management
  - Filtering, grouping, and event notifications (e.g., via e-mail)
- Reporting
- Centralized web GUI interface
  - Fully secured: can monitor using SNMPv3, GUI secured via SSL
  - Supports role-based administration

# Appliance Manager

## Monitoring, Reporting and Historical Trend Analyses

**NOKIA**  
CONNECTING PEOPLE

Change Password | View Licenses | Logout [ root ]

Home | Network Database | Fault Management | Performance | Reports | Admin

Help Find Device  GO Adv. Search

**Home**

- Home
- About

**Inventory Snapshot**

IPSO 24 ↑ 2 ↓ CheckPoint 1 ↑ 0 ↓

**Application Snapshot**

**Recent Alarms**

Status	Failure Object	Date / Time	Alarm Details
Major	172.30.165.180	Jan 04,2006 04:47:54 PM	Node failure. This probably means one or ...
Major	172.30.165.0	Jan 04,2006 04:47:54 PM	At least one node on this net is in failur...
Major	172.30.180.171	Jan 04,2006 04:33:01 PM	Node failure. This probably means one or ...
Major	172.30.180.0	Jan 04,2006 04:33:01 PM	At least one node on this net is in failur...
Major	172.30.165.153	Jan 04,2006 01:54:44 PM	Node failure. This probably means one or ...

**Top 6 Devices by Processor Utilization-Today**

Name [Units in %]	Min.	Max.	Avg.
172.30.180.173	2829	4256	3708
172.30.165.64	8	74	21
172.30.165.170	5	37	19
172.30.165.106	4	19	17
172.30.165.172	5	31	15
172.30.165.174	15	15	15

**Top 6 Devices by Percentage of Active Real Memory-Today**

Name [Units in Kbps]	Min.	Max.	Avg.
172.30.165.169	448	448	448
172.30.180.149	276	276	276
172.30.180.162	207	207	207
172.30.180.146	173	173	173
172.30.180.163	172	172	172
172.30.180.161	170	170	170

**Alarm Summary**

Alarm Count Category

0	8	0	0	16	Topology
0	8	0	0	16	Total

# Historical and Real-time Monitoring

## Reports

### Check Point

Firewall Rules

### IPSO

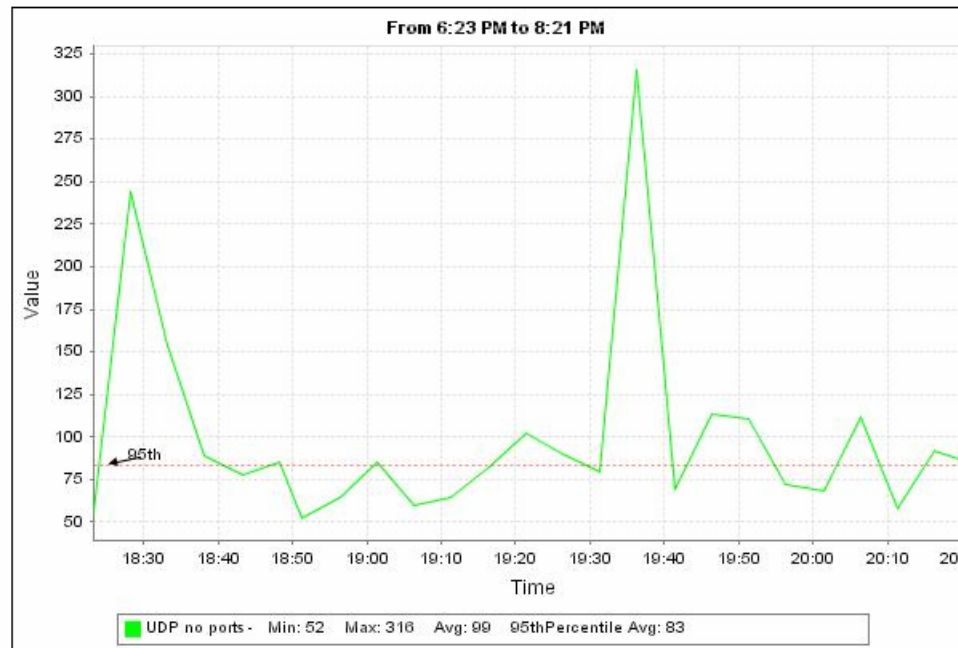
System  
Interface  
**UDP**  
IP  
hfgsh  
TCP

### Alarm Summary

#### Alarm Count Category

0	0	0	0	5	Topology
0	0	0	0	5	Total

## UDP no ports for 172.30.180.145



### Customize Graph

Managed Object  [Select](#)

Reports

View

Show Legend

Period

Start Date

End Date

[View Graph](#)

Date	Time	Value
Jan 4, 2006	6:23 PM	58
Jan 4, 2006	6:28 PM	244
Jan 4, 2006	6:33 PM	154

- From one view, user can compare real-time statistics to historical information
- Report can be easily customized on the fly

# Fault and Health Monitoring

## Fault Management

- ▶ Network Events
- ▶ Alarms

## Alarms

[Add Child View](#) | [Edit View Criteria](#) | [Search](#) | [Print version](#) | [Customize Columns](#)

Page Length  1 to 24 of 24

<input type="checkbox"/>	Status	Failure Object	Actions	Alarm Group	Owner	Date / Time	Alarm Details	Category
<input type="checkbox"/>	↑	<a href="#">172.30.180.6</a>	▲ 🗑️	172.30.180.6		Jan 04,2006 05:08:05 PM	<a href="#">Node clear. No failures on this ...</a>	Topology
<input type="checkbox"/>	↑	<a href="#">IF-172.30.180.6</a>	▲ 🗑️	172.30.180.6		Jan 04,2006 05:08:05 PM	<a href="#">Interface clear.</a>	Topology
<input type="checkbox"/>	⏴	<a href="#">172.30.165.180</a>	▲ 🗑️	172.30.165.180		Jan 04,2006 04:47:54 PM	<a href="#">Node failure. This probably mean...</a>	Topology
<input type="checkbox"/>	⏴	<a href="#">172.30.165.0</a>	▲ 🗑️			Jan 04,2006 04:47:54 PM	<a href="#">At least one node on this net is ...</a>	Topology
<input type="checkbox"/>	⏴	<a href="#">IF-172.30.165.180</a>	▲ 🗑️	172.30.165.180		Jan 04,2006 04:47:54 PM	<a href="#">Interface failure. Status poll f...</a>	Topology
<input type="checkbox"/>	⏴	<a href="#">172.30.180.171</a>	▲ 🗑️	172.30.180.171		Jan 04,2006 04:33:01 PM	<a href="#">Node failure. This probably mean...</a>	Topology
<input type="checkbox"/>	⏴	<a href="#">172.30.180.0</a>	▲ 🗑️			Jan 04,2006 04:33:01 PM	<a href="#">At least one node on this net is ...</a>	Topology
<input type="checkbox"/>	⏴	<a href="#">IF-172.30.180.171</a>	▲ 🗑️	172.30.180.171		Jan 04,2006 04:33:00 PM	<a href="#">Interface failure. Status poll f...</a>	Topology
<input type="checkbox"/>	↑	<a href="#">172.30.165.64</a>	▲ 🗑️	172.30.165.64		Jan 04,2006 03:27:52 PM	<a href="#">Node clear. No failures on this ...</a>	Topology
<input type="checkbox"/>	↑	<a href="#">IF-172.30.165.64</a>	▲ 🗑️	172.30.165.64		Jan 04,2006 03:27:51 PM	<a href="#">Interface clear.</a>	Topology
<input type="checkbox"/>	↑	<a href="#">172.30.180.7</a>	▲ 🗑️	172.30.180.7		Jan 04,2006 03:13:16 PM	<a href="#">Node clear. No failures on this ...</a>	Topology
<input type="checkbox"/>	↑	<a href="#">IF-172.30.180.7</a>	▲ 🗑️	172.30.180.7		Jan 04,2006 03:13:16 PM	<a href="#">Interface clear.</a>	Topology
<input type="checkbox"/>	↑	<a href="#">172.30.165.173</a>	▲ 🗑️	172.30.165.173		Jan 04,2006 03:12:06 PM	<a href="#">Node clear. No failures on this ...</a>	Topology
<input type="checkbox"/>	↑	<a href="#">IF-172.30.165.173</a>	▲ 🗑️	172.30.165.173		Jan 04,2006 03:12:06 PM	<a href="#">Interface clear.</a>	Topology
<input type="checkbox"/>	↑	<a href="#">172.30.165.172</a>	▲ 🗑️	172.30.165.172		Jan 04,2006 03:11:55 PM	<a href="#">Node clear. No failures on this ...</a>	Topology
<input type="checkbox"/>	↑	<a href="#">IF-172.30.165.172</a>	▲ 🗑️	172.30.165.172		Jan 04,2006 03:11:55 PM	<a href="#">Interface clear.</a>	Topology
<input type="checkbox"/>	↑	<a href="#">172.30.165.170</a>	▲ 🗑️	172.30.165.170		Jan 04,2006 03:11:30 PM	<a href="#">Node clear. No failures on this ...</a>	Topology
<input type="checkbox"/>	↑	<a href="#">IF-172.30.165.170</a>	▲ 🗑️	172.30.165.170		Jan 04,2006 03:11:30 PM	<a href="#">Interface clear.</a>	Topology
<input type="checkbox"/>	↑	<a href="#">172.30.165.106</a>	▲ 🗑️	172.30.165.106		Jan 04,2006 03:11:07 PM	<a href="#">Node clear. No failures on this ...</a>	Topology
<input type="checkbox"/>	↑	<a href="#">IF-172.30.165.106</a>	▲ 🗑️	172.30.165.106		Jan 04,2006 03:11:07 PM	<a href="#">Interface clear.</a>	Topology
<input type="checkbox"/>	⏴	<a href="#">172.30.165.153</a>	▲ 🗑️	172.30.165.153		Jan 04,2006 01:54:44 PM	<a href="#">Node failure. This probably mean...</a>	Topology

Alarm Summary

Alarm Count Category			
0	8	0	16
0	8	0	16

Topology Total

- Maintains alarm summary on each page
- Consolidated list makes it easy to drill for details and troubleshoot

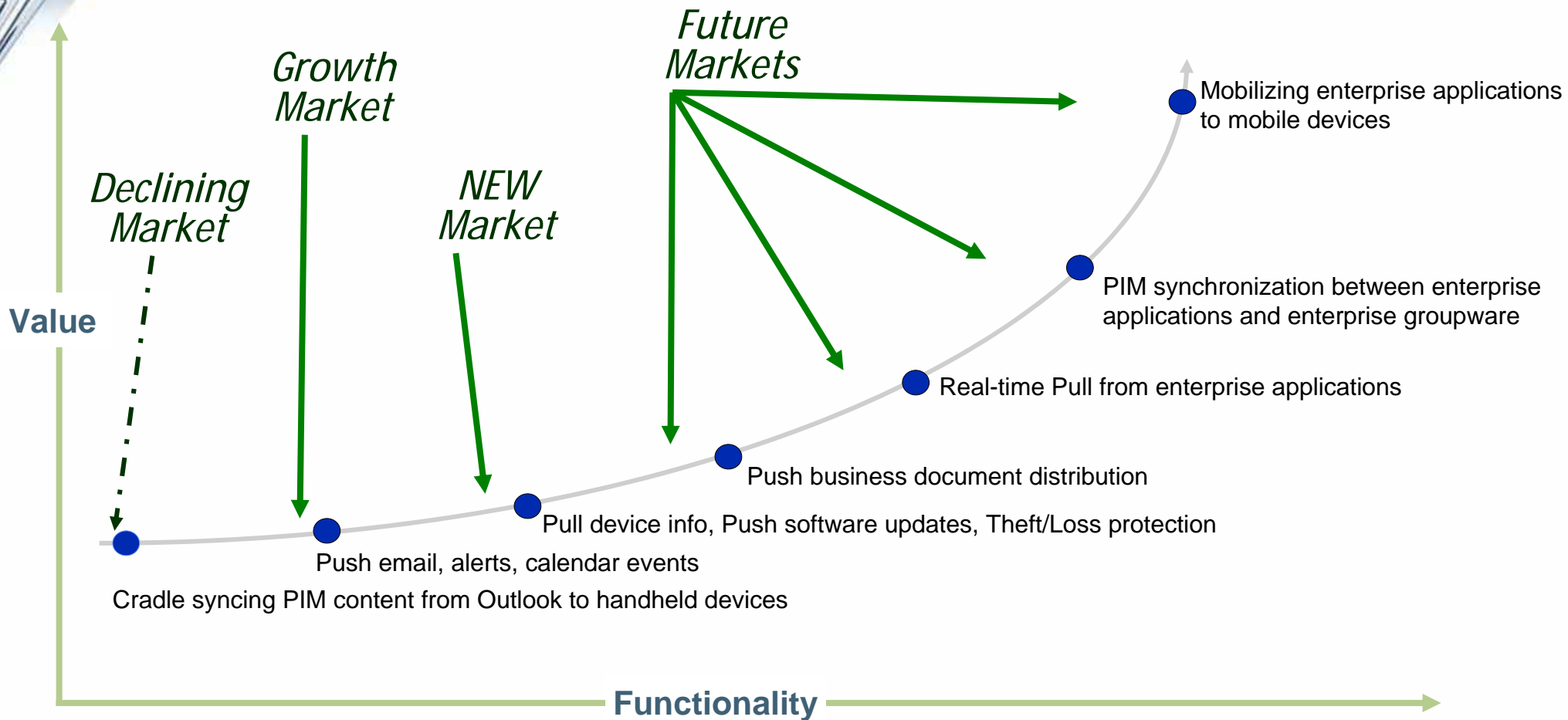


The image features a blurred office environment in the background where two individuals are engaged in a discussion. In the foreground, several large rolls of paper, likely architectural blueprints, are neatly stacked and partially unrolled, showing technical drawings. The overall scene conveys a professional and collaborative atmosphere.

# Nokia Intellisync Acquisition

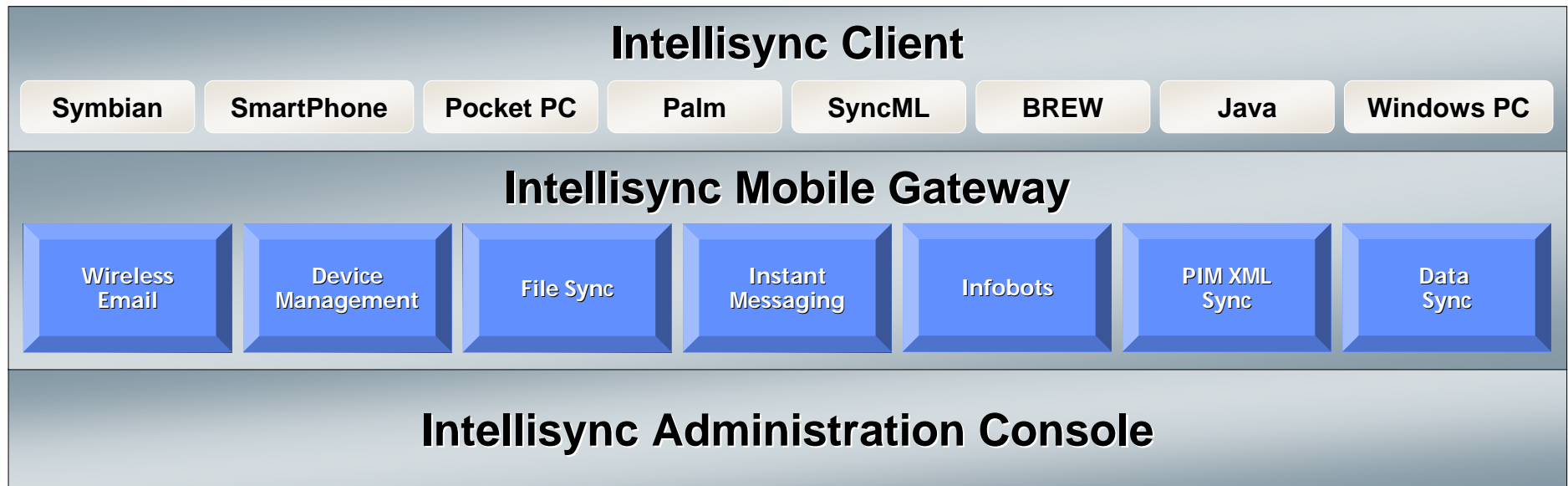


# How the Mobility Market is Evolving



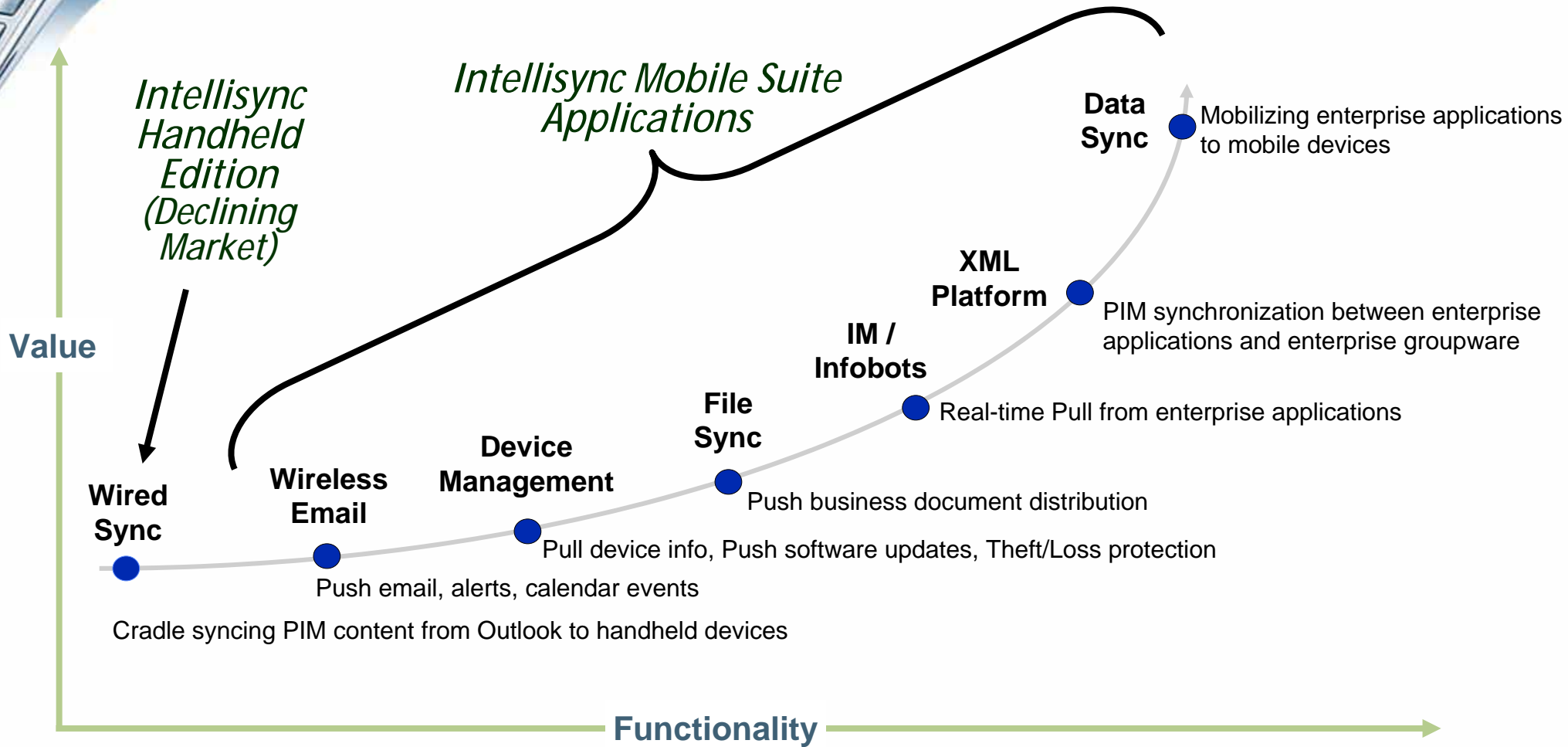
# Mobile Suite Platform Overview

- One Client GUI
  - + One Communications Gateway
  - + One Admin Console across all modules
- = **One Infrastructure Choice**



~~Intellisync Mobile Gateway~~  
asset store

# Addressing the Enterprise Mobility Needs



# Mobile Suite Platform

## Any Device



## Any Connection



Carrier Wireless Network



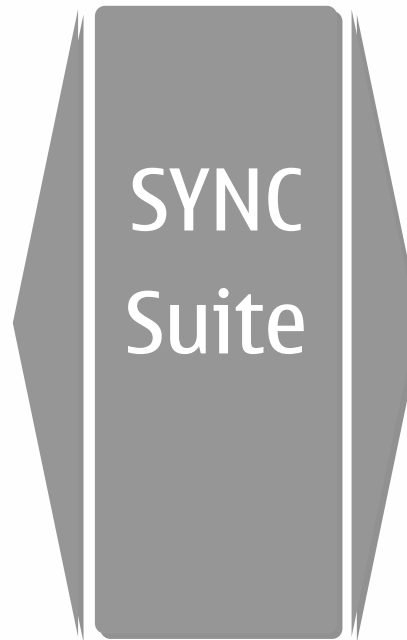
Internet



Local Area Network



802.11 Wireless LAN



## Any Information



eMail Server(s)



File Servers



Database Servers



Systems Management Servers



Corporate Portals



Corporate IM

Email & PIM

Business Documents

Application Data  
*CRM, SFA, FFA*

Systems Management

Intranet Sites

Corporate Travel Information

Instant Messaging



**NOKIA**  
CONNECTING PEOPLE